

SUNMI L2s PRO Smart Mobile Terminal

Time to PRO your frontline operations.

Powered by
SUNMI OS

Compatible with
SUNMI DMP



Fast and seamless barcode scanning.

Read scratched, stained, crinkled barcodes up to 1m away even on the high shelves in your warehouse.

Triple protection.

L2s PRO is specifically designed to sustain rough environments: IP68 rating, 1.5 drop rate and up to 1.2m deep water for 30 min.

Long battery life enables stable performance.

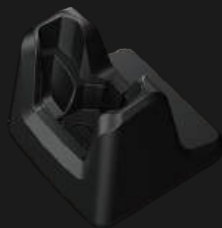
The removable ATL 5000mAh battery features long run time, making L2s PRO a good choice for battery intensive usage. With 18W quick charge, it can be fully charged in 3 hours, further reducing your operations downtime.



Multiple accessories

Single Charging Base

Charge the PDA device.



Charging Base

PDA and battery can be charged simultaneously, an UHF trigger handle can also be charged with the base.



4-slot charging base

Support up to 4 PDA charging simultaneously, and can also be charged with a protective case, trigger handle, or hand strap.



4-slot battery charger

Support charging up to 4 batteries simultaneously and intelligent battery management.



Trigger Handle

Further improve your barcode scanning efficiency especially for warehousing, manufacturing and logistics sectors.



UHF Trigger Handle*

Read multiple RFID tags at once. Fastest read rate for RFID tags >200 tags/sec. Longest read range for an RFID tag >10M.

*The read rate and range depend on actual environments.



Enhanced Performance

Octa-core 2.0GHz processor

Multiple memory config options:
3+32GB, 4+64GB, 6+128GB

OCTA
CORE

Strong Protection

IP68³.
1.5m drop spec⁴.
Corning Gorilla Glass
touchscreen for enhanced drop
and scratch resistance.



NFC



SUNMI OS¹

Designed for business scenarios.
Smooth, secure and reliable.



SUNMI DMP²

Manage everything of your
devices.

High Volume



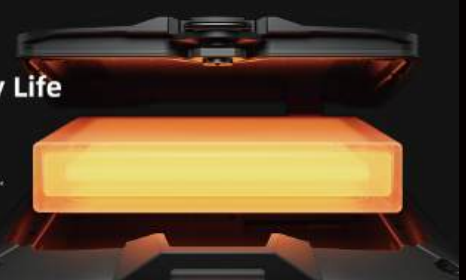
Fast and Accurate Reading

Read distance up to one meter⁵.
Read scratched or crinkled barcodes.
Read barcodes under strong light.
OCR.



Long Battery Life

5000mAh battery +
18W quick charge⁶.
Long battery runtime.



SUNMI L2s PRO Tech Specs

Product Model

T8920

OS

SUNMI OS
(*based on Android 12)
GMS certified

Processor

Cortex-A53, octa-core
(4*2.0GHz+4*1.5GHz)

Memory

3GB RAM+32GB ROM
4GB RAM+64GB ROM
6GB RAM+128GB ROM
(optional)

Display

5.5" HD+, 1440*720, IPS
Capacitive multi-touch

Camera

Front: 2MP FF
Rear: 13MP, AF, Flash,
support 1D/2D
barcode scanning

NFC Reader

Supports TypeA&B card,
Mifare card, Felica card,
ISO/IEC 14443 and
ISO15693 compliant

Scanner

1D/2D barcode scan
engine

Speaker

1* 1.5W

Card Slot

1* PSAM
1* NANO SIM + 1* MINI SIM
1* MicroSD (TF) up to 256G

Network

2G&3G&4G

Wi-Fi

2.4GHz/5GHz
IEEE 802.11 a/b/g/n/ac

Bluetooth

Bluetooth 5.0
BLE

GPS

AGPS
GPS, Glonass, Beidou,
Galileo

MIC

2* MIC

Buttons

1* Power on/off button
1* Custom button
2* Volume (+/-) button
2* Scan button (left/right)

Ports

1* Audio jack
1* Type-C USB OTG supported
2* Pogo pin at the bottom for charging
8* Pogo pin on the back for accessories

Sensor

Gravity Sensor,
Light Sensor,
Compass, Distance Sensor,
Barometer Sensor (optional)

Battery

Removable polymer lithium
battery, 3.8V/5000mAh

Power Adapter

Input: AC 110-240V
Output: 9V 2A / 5V 2A
*Vary from different versions

Dimensions (L*W*H)

154.4*74.6*17.1mm

Total Weight

250g
*Vary from different versions

Protection Level

IP68
1.5m drop test
*Data from Third-party Lab

Environment

Operating temperature:
-20°C~55°C
Storage temperature:
-40°C ~ 70°C

Accessories (optional)

Single charging base, Charging base, Trigger handle, UHF trigger handle, Hand strap (included), 4-slot charging base, 4-slot battery charger, Protective case, Screen tempered glass

1. Based on Android 12, SUNMI OS is customized for business scenarios.

2. Some features may be unavailable due to GMS restrictions.

3-5. Certified by third-party authorities.

6. Quick charging functions optional.

7. The usable memory may be less than the installed memory.

8. All specifications are subject to change without (prior) notice.