

VENUS Ultimate

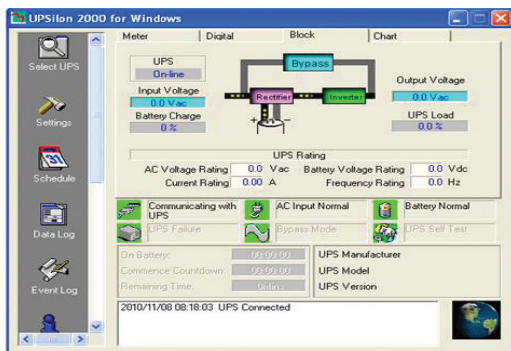
VNU 1-10kVA

DSP TRUE ONLINE DOUBLE CONVERSION UPS



Features

- True Online Double Conversion UPS
- Advanced Digital DSP controlled with IGBT technology
- High input Power Factor Correction PFC >0.99
- Output Pure Sine Wave less than 3% (THDv)
- Output Voltage Pure Sine Wave 220Vac +/-1%
- Wide Input Voltage Range 154-286Vac
- High Inverter Efficiency (approx. ≥90%)
- Zero Transfer Time (True Online)
- Cold Start Soft Running
- Built in Static Transfer Switch (SCR)
- Self Diagnosis at UPS start up
- Advanced Battery Management (ABM)
- External Battery unit (Option)
- EMI/RFI and Power line noise protection
- Blackout, Brownout, Surge, Lightning, Spike, Harmonic Overload and Short circuit
- USB Port with UPSilon 2000 or WinPower monitoring
- SNMP/HTTP monitor capability / AS400 Dry Contact (Option)
- Parallel Redundancy N+X 5-10kVA Support 4Unit
- Maintenance Bypass Switch 5-10kVA (Option)
- Economy mode(ECO), Emergency Power Off (EPO)
- Automatic Adjust Cooling Fan Speed
- TIS 1291 Part 1-2553, Part 2-2553, Part 3-2555 : C1, CE : UL : IEC / EN62040-1, -2, -3, IEC / EN55022
- ISO9001, ISO14001 Certified Manufacturer

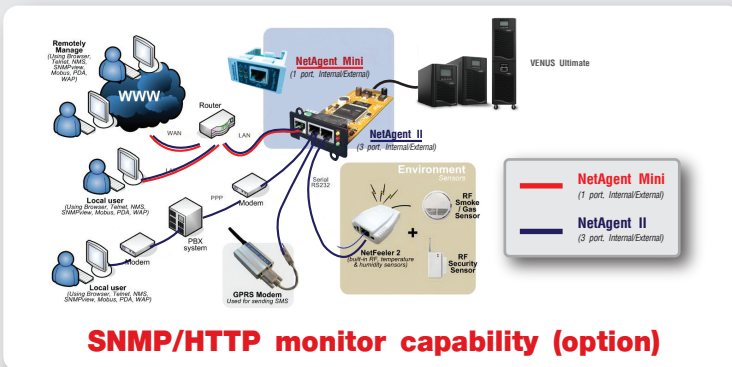


UPSilon 2000 or WinPower UPS monitoring

LCD / LED+SW HMI DISPLAY REAL TIME STATUS



1. LCD / Mimic HMI Display
2. UP Switch
3. Down Switch
4. ESC / OFF Switch
5. ENTER / ON Switch
6. Line Mode
7. Battery Mode
8. Bypass Mode
9. Fault Mode



SNMP/HTTP monitor capability (option)

Chuphotic UPS Product range 500VA to 1000KVA have been wide useful to protect Electronic Equipment such as Computer, Server, Networks, PABX, CCTV, Telecommunications, Medical & Scientific Equipment and Industrial Machine from Power Quality Problem in Over / Under Voltage, Blackout, Surge, Spike, Harmonic, Noise and Frequency Drift.



มอก.1291
 เล่ม 1-2553
 เล่ม 2-2553
 เล่ม 3-2555



VENUS Ultimate

DSP TRUE ONLINE DOUBLE CONVERSION UPS

SPECIFICATION

| Model s2.2 | Standard UPS | VNU1000 | VNU2000E | VNU2000 | VNU3000 | VNU5K/P | VNU6K/P | VNU10K/P |
|------------------------------------|--|---|--------------|--------------|--------------|--------------|--|---------------|
| | Long backup UPS | VNU1000L | VNU2000EL | VNU2000L | VNU3000L | VNU5KL/P | VNU6KL/P | VNU10KL/P |
| CAPACITY PF=0.9 | For Computer load | 1000VA/900W | 2000VA/1800W | 2000VA/1800W | 3000VA/2700W | 5000VA/4500W | 6000VA/5400W | 10000VA/8000W |
| SYSTEM | Controller | Intelligent UPS with DSP controlled | | | | | | |
| | Technology | High Frequency Online Double Conversion UPS with Power Factor Correction(PFC) IGBT Technology | | | | | | |
| INPUT | Voltage | 220Vac: Single Phase nominal (Adjustable 208 / 220 / 230 / 240Vac) | | | | | | |
| | Voltage Range | 220Vac: -30% +30% (154-286Vac) | | | | | | |
| | Frequency | 50/60 Hz ±10% (Auto Detect) at nominal voltage (±10% option) | | | | | | |
| | Power Factor | PF >0.99 at Full Load | | | | | | |
| OUTPUT | Voltage | 220Vac ±1% / (208/220/230/240 adjusted by key switch front panel and software) | | | | | | |
| | Phase | Single Phase (L-N+PE) | | | | | | |
| | Frequency | Normally locked to line frequency, Free running 50Hz ±0.1%/(60 Hz adjusted by switch front panel and software) | | | | | | |
| | Wave Form | Pure Sine Wave | | | | | | |
| | Harmonic Distortion | THDv : <3% at Linear Load, <5% at Non Linear Load | | | | | | |
| | Transient Condition | ±5% for 100% instantaneous load variation (Step Load) | | | | | | |
| | Overload Capability | 120% for 60 sec., 150% for 30 sec., >150% for 300ms | | | | | 120% for 2min., 150% for 30sec., >150% for 1sec. | |
| | Crest Factor | 3 : 1 | | | | | | |
| EFFICIENCY | AC to AC : Line Mode | Approximate ≥ 90% | | | | | Approximate ≥ 94% | |
| | DC to AC : Battery Mode | ≥ 87% at Full Linear Load | | | | | ≥ 94% at Full Linear Load | |
| BATTERY | Type | Seal Lead Acid (Maintenance-Free) Rechargeable Battery | | | | | | |
| | Capacity | 3x12V7.5Ah | 6x12V 7.5Ah | 8x12V 7.5Ah | 20x12V 7.5Ah | 20x12V 9.6Ah | | |
| | Voltage | 36Vdc | 72Vdc | 96Vdc | ± 120Vdc | | | |
| | Standard Backup Time | 15-30 min. (Depend on Computer Load) | | | | | | |
| | Extend Backup Time | Battery Unit Option | | | | | | |
| | Recharge Time | 6-8 hours to 90% after load discharged | | | | | | |
| | Charger Current(A) | Standard 1A / Long Backup 6A | | | | | Standard 1A / Long Backup 10A(Adjust) | |
| TRANSFER TIME | Main fail or Recover UPS to by pass and vice versa | Zero Transfer Time, Static Transfer Switch (SCR) | | | | | | |
| INDICATOR LED & LCD | Front Panel LCD & SW | LED/MiniMic Status : Line, Battery, Bypass, Fault / Input, Rectifier, Battery, Inverter, Bypass, Load INPUT/OUTPUT : Voltage, Frequency, Temperature, Bypass LOAD : Load level, Percent, VA, Watt, Overload, Short Circuit BATTERY : Battery Voltage / Batt Level / Batt Cap, Batt Remaining Time, Low - Over Charging / Discharging | | | | | | |
| PROTECTION | EMI / RFI Attenuation | >40 dB | | | | | | |
| | Surge Protection | UL recognized surge protection to std.1449 | | | | | | |
| | Surge Energy Dissipation | 220 Joules (510 Joules option)(2 microsec wave form) | | | | | | |
| AUDIBLE ALARM | Multiple Tones with Reset for Silence | Mains Failure, Low Battery, Overload and UPS fault with Fault / Warning Code | | | | | | |
| INPUT PLUG | Power Cord 1.5 meter | NEMA 5-15P (IEC 320, GS option) | | | | | Terminal | |
| OUTPUT OUTLET | Universal Plug | 3xNational | 6xNational | | | Terminal | | |
| COMUNICATION INTERFACE | USB | USB port can be connected to PC, workstation or servers for automatic unattended shutdown | | | | | | |
| | Software | UPSilon2000 or WinPower for windows Me, XP, 7, 8, 10, Novell Netware, Linux, FreeBSD (IBM, Sun, Solaris option) | | | | | | |
| | optional | SNMP Card(Network), AS400 Card(Relay Dry Contact) Parallel Card | | | | | | |
| ACOUSTIC NOISE | At 1 meter | < 45 dBA | | | | | < 50 dBA | |
| ENVIRONMENT | Temperature | 0-40°C | | | | | | |
| | Humidity | 0-95 % (Non-Condensing) | | | | | | |
| DIMENSIONS (WxHxD) mm | UPS include standard battery | 145x210x300 | 200x340x460 | | | | 191x720x460 | |
| | Long backup UPS | 145x210x300 | 200x340x460 | | | | 191x720x460 | |
| | Battery Unit extension (option) | Separate (UPS and battery extension rack) | | | | | | |
| WEIGHT (approximate in Kg.) | UPS include standard battery | 13 | 25 | 29 | 30 | 70 | 72 | |
| | Long Backup UPS | 5 | 10 | 10 | 11 | 13 | 15 | |
| | Battery Extension Unit (option) | Depending on battery capacity | | | | | | |
| CONFORMANCE | Design regulation | TIS.1291 Part1-2553, Part2-2553, Part3-2555 : C1, CE : IEC 62040-1, -2, -3, IEC 55022, IEC 61000 | | | | | TIS.1291 Part1-2553, Part2-2553, Part3-2555 : C1, CE : IEC 62040-1, -2, -3, IEC 55022, IEC 61000 | |

*All above specification may be change without prior notice.

CHU-EN.BRO-56.VNU S2.2.Rev1.00/2023

บริษัท ชูไฟติก จำกัด

949 หมู่ 9 ต.ลำไทรเหนือ อ.เมืองสมุทรปราการ จ.สมุทรปราการ 10270

โทรศัพท์: 02 186 3010 แฟกซ์: 02 186 3018-9

www.chuphotic.com

E-mail: ups@chuphotic.com

ตัวแทนจำหน่าย :