



EM20-80 V2
OEM Scan Engines

Features

6th Generation UIMG Technology.

The EM20-80 is armed with Newland's latest generation scanning technology. Sporting a new decoding algorithm on its CPU processor, the engine delivers excellence no matter what code it's facing. Additionally, it allows the firmware to be adapted to your specific environment and application.

Optimized for On-Screen Codes.

The EM20-80 is ready for any smartphone or tablet presented to it. The wide scan angle and optimization for near-distance scanning both match the intuitive way end-users present their device to a scanner. This keeps lines moving and operations running smoothly.

Resistance to High Vibrations.

The sturdy PCB construction and vibration-proof

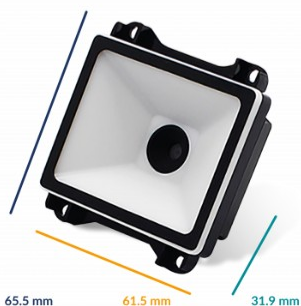
connectors make the EM20-80 highly resistant against vibrations. This feature has particularly proven its value for ticket validation in buses and trains.

Direct Connection to PC.

The EM20-80 is set up with an additional 4-pin connector on its decoder board. This way, you can directly connect the engine to your computer via a universal USB interface.

EasySet Configuration.

The EM20-80 is compatible with our master configuration software EasySet. Built for Windows OS, this software is a useful tool to integrators for building and testing configurations, cloning and deploying configurations, and updating scanner firmware.



Suggested industries



Retail



Hospitality



Gaming



Healthcare



Parking

EM20-80 V2 Technical specifications

Data Capture

1D	All major 1D symbologies, including EAN-8, EAN-13, UPC-E, UPC-A, Code 128, UCC/EAN128, I2Of5, ITF-14, ITF-6, Matrix 25, CodaBar, Code 39, Code 93, ISSN, ISBN, Industrial 25, Standard 25, Plessey, Code11, MSI-Plessey, UCC/EAN Composite, GS1 Databar, Code 49, Code 16K.
2D	All major 2D symbologies, including PDF 417, QR Code, Micro QR, Data Matrix, Aztec, Maxicode, Chinese Sensible Code, GM Code, Micro PDF417 Code, Code One.
Image Sensor	640x480 CMOS
Illumination	White LED
Depth of Field EAN 13 (13mil)	25mm-110mm
Depth of Field PDF417 (6.67mil)	35mm-45mm
Depth of Field DataMatrix (10mil)	35mm-50mm
Depth of Field QR (15mil)	0mm-90mm
Field of View Horizontal	68°
Field of View Vertical	51°
Scan Angle Roll	360°
Scan Angle Pitch	±40°
Scan Angle Skew	±45°
Minimal Print Contrast	30%

Physical

Current @ 3.3VDC Operating	141mA
Current @ 3.3VDC Standby	93mA
Current @ 5VDC Standby	51 mA
Dimensions (mm)	61.5(W)x65.5(D)x31.9(H)mm (max)
Input Voltage	12-pin FPC connector: 3.3-5VDC±5% 4-pin box connector: 3.3-5VDC±5%
Interfaces	TTL-232, RS-232, USB
Notifications	Beeper, Green LED Indicator
Power Consumption	3.3VDC: 466 mW 5VDC: 755 mW (typical)
Weight	33g

Environmental

Ambient Light	0~100,000lux (natural light)
Operating Temperature	-40°C to 60°C
Storage Temperature	-40°C to 75°C
Humidity	5% to 95% (non-condensing)

Accessories

Standard	180mm flexible flat cable (FFC), EVK2037
Optional	USB cable, RS-232 cable with DC5V plug adapter

Software

Configuration Tools	EasySet
---------------------	---------

Newland EMEA HQ

+31 (0) 345 87 00 33

info@newland-id.com

newland-id.com

Feel free to contact us or a partner near you

visit newland-id.com/partners

Specifications are subject to change without notice

© Newland EMEA 2023, all rights reserved

EM20-80 V2 Technical specifications

Certifications

Hardware	CE EMC Class B, FCC Part15 Class B
----------	------------------------------------

Warranty

Standard	2 years
----------	---------

Newland EMEA HQ

+31 (0) 345 87 00 33
info@newland-id.com
newland-id.com

Feel free to contact us or a partner near you

visit newland-id.com/partners

Specifications are subject to change without notice

© Newland EMEA 2023, all rights reserved

