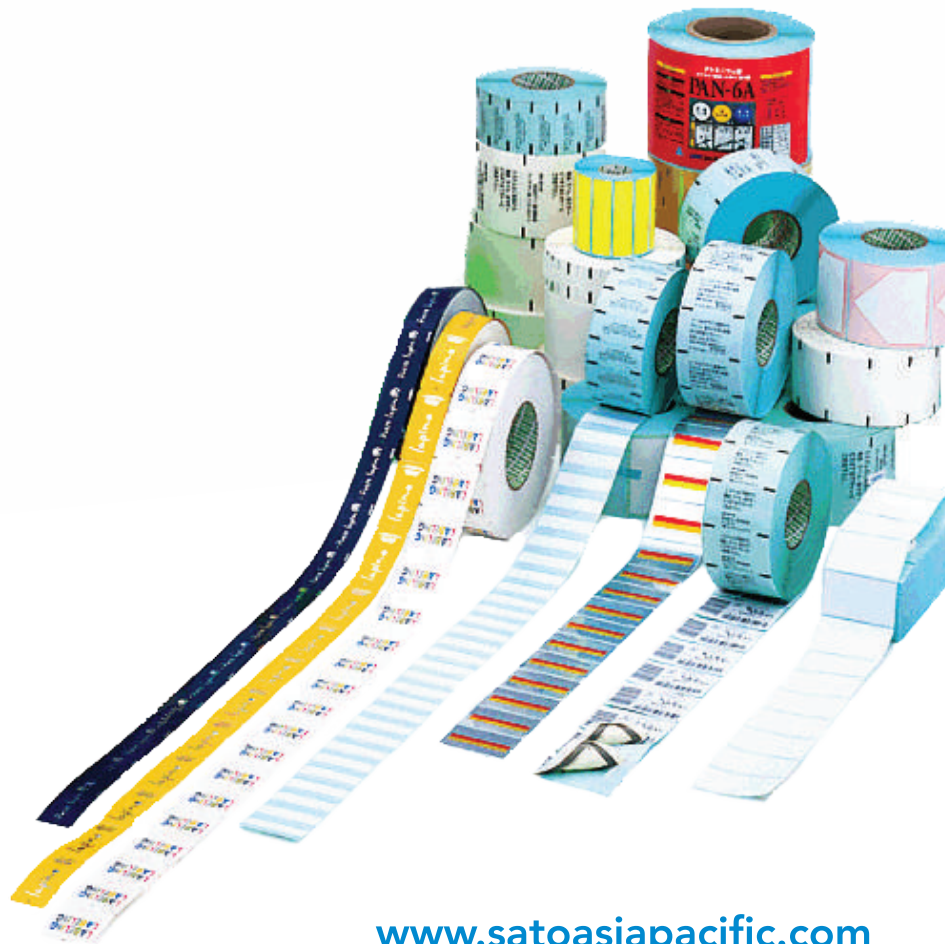


One-stop Platform for all your Labelling Needs



Production Capability & Asia Network

State-of-the-art equipment & facilities

With over 70 years experience in the industry and state-of-the-art machines & equipment, we consistently produce top quality, high-performance label products & supplies.

Our label production facilities are ISO9001 & ISO14001-certified.



Checking of thickness consistency



Checking of adhesive bonding & peeling strength



Air-shower facilities in our production factories



Label factories in Asia

SATO is able to support your labeling needs across Asia. We have multiple production facilities in Asia including China, Indonesia, Japan, Malaysia, Singapore, Thailand and Vietnam.

(As of Oct. 2018)

Wide Range of Labels and Latest Printing Techniques to Meet your Labelling Needs

Tough, Durable

Chemist label

TT

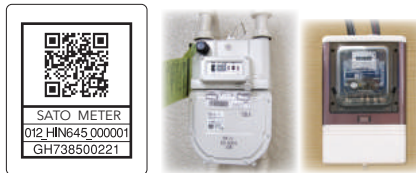
High resistance to heat and scratch & highly durable. Available in white & silver, this is ideal for nameplate labels.



Ultra label

TT

Can be used for over 10 years in external environments. Suitable for tracking of assets such as utilities meters.



Techno thermal

DT

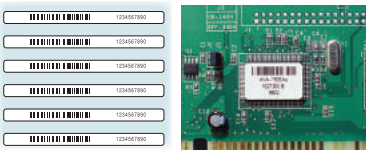
Printed contents on labels less likely to fade even when exposed to bright conditions for long periods of time.



Heat resistant

TT

Made of polyimide, labels can withstand up to 260°C for 5 minutes. Suitable for use in electronics industry as labels can endure PCB soldering.



Ultra heat resistant

TT

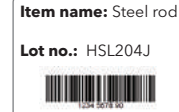
Labels can withstand up to 1000°C. Suitable for use in metal industry for process control and mold control.



Tough neo thermal

DT

Highly resistant to solvents, this type of thermal paper labels provide long-lasting performance even when applied outdoors for 4 weeks or indoors for 2 years.



Direct thermal wristband

DT

Does not require ink ribbon for printing, affordable pricing for short term usage such as day patient tracking, events, etc.



Thermal transfer wristband

TT

Superior softness and gentle on skin. Top choice for healthcare providers to ensure patient satisfaction and safety.



Blood bag label

TT

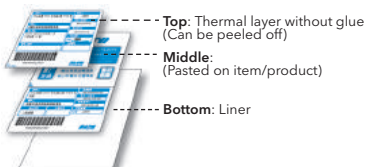
Specially designed for tagging bags for donated blood and blood products after blood processing, our label meets strict blood processing protocols.



3-layer label

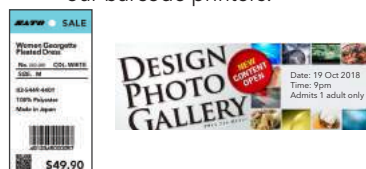
DT

3-layer direct thermal label which consists of thermal top layer, middle layer and liner. Top layer can be peeled off without glue after label is pasted on products.



Tag / Ticket / Voucher

Non-glue materials such as tags, tickets and vouchers produced by our label factories can be used for variable printing using our barcode printers.



Silicone-free label

TT

Produced in clean room environment (class 10,000), this type of labels should be used with plastic-core ribbons.



Special Material

Hologram and micro-text

Hologram and micro-text can be printed on labels for the purpose of verifying authenticity and preventing counterfeit. Suitable for credit cards, gift vouchers, etc.



Fluorescent ink

Fluorescent ink that is only visible under UV/black light can be used for printing of company logo, text, etc for authenticity verification.



Void material

Label leaves behind text/marks/patterns when lifted, providing clear indication of unauthorised attempt to remove label.



Security

Gas cylinder label

Highly resistant to harsh conditions and suitable for application on non-flat surfaces.



Oil drum label

Adheres under normal storage condition but label edge floats when temperature reaches 150°C making it easy to peel off in drying furnace of correcting process.



Tyre label

Designed especially for application on tyre treads, labels stick securely on tyres as the adhesive adheres even on the grooves of the treads.



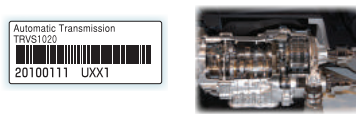
Ultra low temperature

Labels bond well even in temperatures as low as -196°C. Highly suitable for use in food and healthcare applications.



Oil-tolerant

With special type of adhesive that absorbs oil, labels can stick well on surfaces with engine oil, anti-rust oil, cooking oil, etc.



Textured surface label

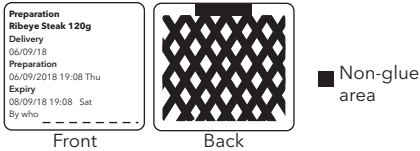
Labels with this special type of adhesive adhere well on textured surfaces such as concrete and wood.



Special Adhesive

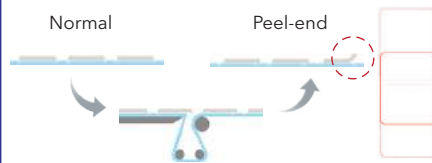
Pattern glue

Strength of glue is adjusted by controlling glue pattern printed at the back of label. Quick Service Restaurant users can avoid leaving glue and paper residue when removing labels from food rotation containers.



Peel-end

This is a special technique used to produce labels that can be peeled off easily when used with dispenser or auto-labellers.



Die-Cut

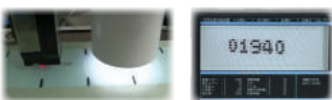
This special die-cut technique makes it difficult for label to be peeled off. Highly suitable for tamper-proofing.



Special Printing Technique

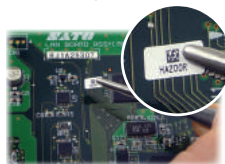
Serial number printing

Serial number can be printed at the front or back side of label. After serial numbers are printed, Quality Engineers will check to ensure there is no truncated printing, duplication or missing number.



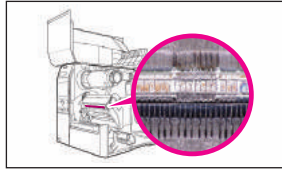
Printing on ultra-small labels

Highly accurate and precise printing can be done on label as small as 3mm x 7mm using our HR2 printer. Ideal for applying on electronic components and PCBs.

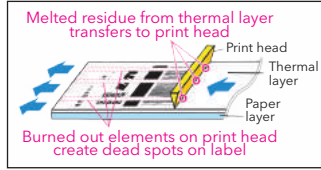


Reduce operating costs by using genuine SATO consumables

An increasing number of printer errors are being caused by heat buildup in the printing elements. This problem is **especially significant for printers using non-SATO labels**.



Print head burnout



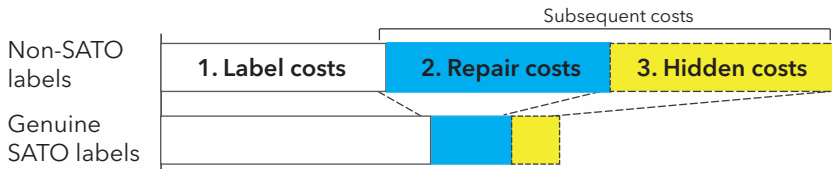
Transfer of label residue



Voids in printed image

Operating Costs = Label Costs + Repair Costs + Hidden Costs (lost opportunities)

Cost comparison: Non-SATO VS. Genuine SATO labels



After including the **subsequent costs**, buying SATO labels becomes a better deal!

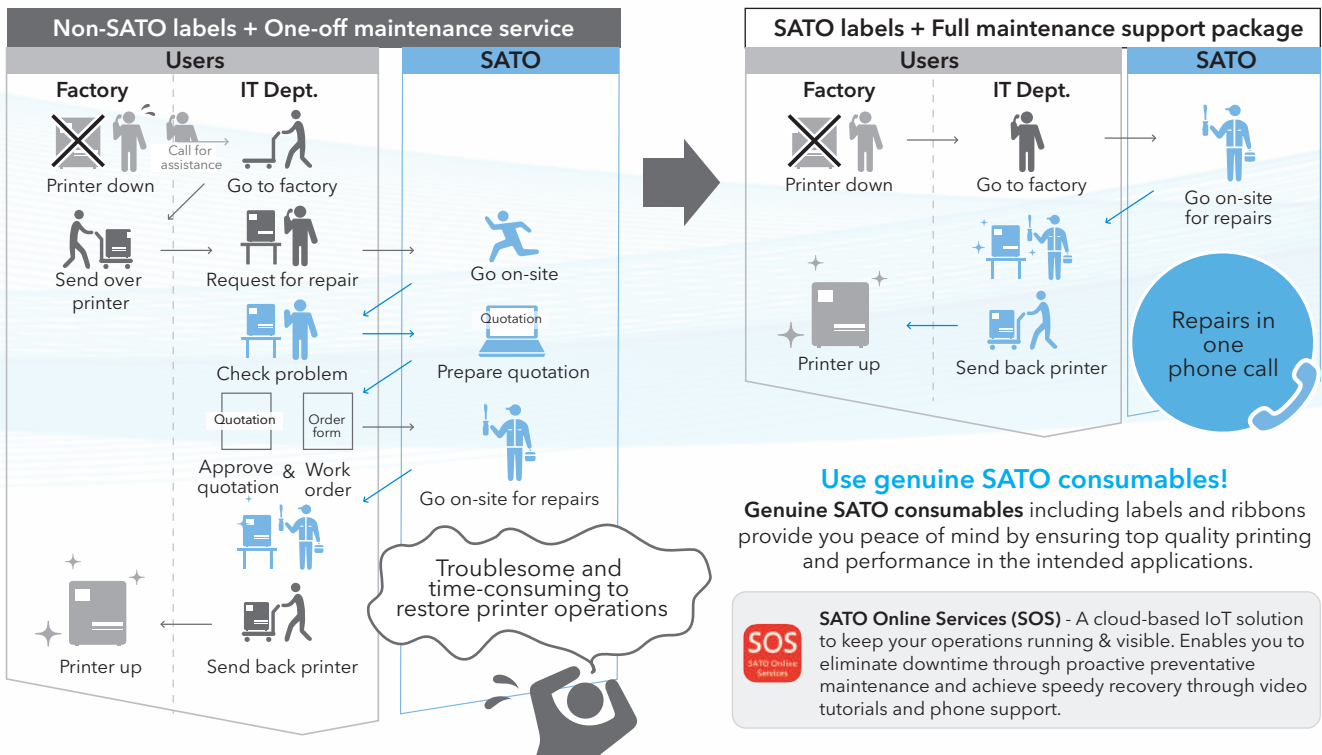


2 Repair costs = Cost of printer parts fixed/replaced + Service fee + Destination charge

Enjoy savings on repair costs as printers break down less often when using SATO labels

3 Hidden costs = Profits / Opportunities lost during printer downtime

Join our full maintenance support package to cut hidden costs. What's more, reduce downtime with SATO Online Services (SOS)*!



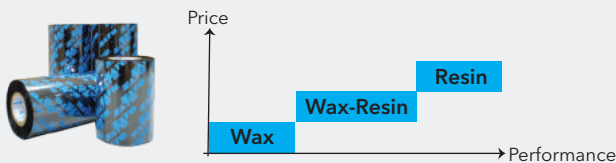
Use genuine SATO consumables!

Genuine SATO consumables including labels and ribbons provide you peace of mind by ensuring top quality printing and performance in the intended applications.



SATO Online Services (SOS) - A cloud-based IoT solution to keep your operations running & visible. Enables you to eliminate downtime through proactive preventative maintenance and achieve speedy recovery through video tutorials and phone support.

Choose the right ink ribbon



Wax	Low cost, low resistance to harsh conditions
Wax-Resin	Good print quality when used for high-speed printing
Resin	High-resistance against harsh conditions and solvents

SATO provides consultation to find the best ribbon to match your label material and application.

Customised designs for different applications

Our design team will work closely with you to fully understand your requirements so as to create the best design to serve your labelling needs. Here are some of our designs:

